

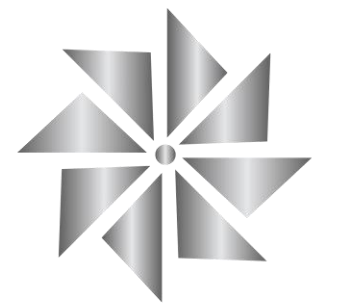
Bahia Graphite

FINANCING PRESENTATION

Q1 2025

UNLEASHING BRAZIL'S GRAPHITE POTENTIAL: BAHIA GRAPHITE CORPORATION

WWW.BAHIAGRAPHITE.COM



IMPORTANT NOTICES & DISCLAIMERS

DISCLAIMER AND CAUTION – This presentation does not constitute or form part of and should not be construed as, an offer to sell or issue or the solicitation of an offer to buy or subscribe for securities of Bahia Graphite Corporation (“Bahia Graphite”) in any jurisdiction or an inducement to enter into investment activity. No part of this presentation, nor the fact of its distribution, should form the basis of, or be relied on in connection with, any contract or commitment or investment decision whatsoever. Forward-looking information contained in this presentation is based on Bahia Graphite’s current estimates, expectations and projections, which Bahia Graphite believes are reasonable as of the current date, and assumes the following, each as described in this presentation, the completion of the go public transaction via RTO, the partnership with the major EU partner, the financings, certain drilling, permitting and construction, the proposed and/or projected capital structure of Bahia Graphite. There can be no assurance that these estimates, expectations and projections will prove to have been correct or that the acquisition, financing, amalgamation, listing and other related transactions will complete. Historical statements should not be taken as a representation that such trends will be replicated in the future. No statement in this presentation is intended to be nor may be construed as a profit forecast. This presentation includes industry and other statistical information that has been obtained from independent industry publications, government publications, market research reports and other published independent sources. Such publications and reports generally state that the information contained therein has been obtained from sources believed to be reliable. Although Bahia Graphite believes these publications and reports to be reliable, it has not independently verified any of the data or other statistical information contained therein, nor has it ascertained or validated the underlying economic or other assumptions relied upon by these sources. Bahia Graphite has no intention and undertakes no obligation to update or revise any such information or data, whether as a result of new information, future events or otherwise, except as, and to the extent required by applicable securities laws. The securities of Bahia Graphite constitute a highly speculative investment. Management considers the securities of Bahia Graphite to be appropriate only for investors who can bear the economic risk of the loss of their entire investment in Bahia Graphite. Before making any investment, prospective investors should conduct their own independent investigation and analysis of an investment and thoroughly and carefully consider an investment with their own independent financial, tax, legal and accounting advisors. Any copying, reproduction, republishing, translation, transmission, modification, distribution or other exploitation of this presentation, or any elements thereof, without the prior written consent of Bahia Graphite is strictly prohibited.

TAXATION - Prospective investors should be aware that the purchase of securities of Bahia Graphite may have tax consequences. Bahia Graphite assumes no responsibility for the tax consequences of any investment. Each prospective investor is strongly encouraged to consult its own tax advisor concerning any purchase of securities of Bahia Graphite and the holding and disposition of any such securities. This presentation does not address the tax consequences of the purchase, ownership or disposition of any such securities.

NOTE TO U.S. PERSONS – This Presentation does not constitute an offer to sell or the solicitation of an offer to buy, nor shall there be any sale of securities of Bahia Graphite in any jurisdiction in which an offer, solicitation or sale would be unlawful prior to registration or qualification under the securities laws of such jurisdiction. The securities have not been approved or disapproved by the United States Securities and Exchange Commission or by any state securities commission or regulatory authority, nor have any of the foregoing authorities or any Canadian provincial securities regulator passed on the accuracy or adequacy of the disclosures contained herein and any representation to the contrary is a criminal offense. The securities of Bahia Graphite have not been and will not be registered under the United States Securities Act of 1933, as amended or the securities laws of any state.

CAUTIONARY NOTE FOR U.S. INVESTORS REGARDING RESERVE AND RESOURCE ESTIMATES - Canadian public disclosure standards, including National Instrument 43-101 Standards of Disclosure for Mineral Projects (“NI 43- 101”), differ significantly from the requirements of the Securities and Exchange Commission set forth in Industry Guide 7 (“Industry Guide 7”), and information concerning mineralization, deposits, mineral reserve and resource information contained or referred to herein may not be comparable to similar information disclosed by U.S. companies in accordance with Industry Guide 7.

IMPORTANT NOTICES & DISCLAIMERS

INVESTOR NOTICE STATUTORY RIGHTS OF ACTION FOR DAMAGES OR RESCISSION FOR CANADIAN INVESTORS – This presentation may be considered to be an “offering memorandum” under applicable Canadian securities laws. Securities legislation in certain of the provinces may provide purchasers under an offering memorandum with, in addition to any other rights they may have at law, rights of rescission or to damages, or both, when an offering memorandum that is delivered to purchasers contains a misrepresentation. These rights and remedies must be exercised within prescribed time limits and are subject to the defenses contained in applicable securities legislation. Recipients of this presentation should refer to the applicable provisions of the securities legislation of their respective province for the particulars of these rights or consult with a legal adviser. The following is a summary of the statutory rights of rescission or to damages, or both, available to purchasers in Ontario. In Ontario, every purchaser of securities purchased pursuant to this presentation shall have a statutory right of action for damages and/or rescission against Bahia Graphite if this presentation or any amendment thereto contains a misrepresentation. If a purchaser elects to exercise the right of action for rescission, the purchaser will have no right of action for damages against Bahia Graphite. This right of action for rescission or damages is in addition to and without derogation from any other right the purchaser may have at law. In particular, Section 130.1 of the *Securities Act* (Ontario) provides that, if an offering memorandum, such as this presentation if considered to be an offering memorandum, contains a misrepresentation, a purchaser who purchases securities hereunder during the period of distribution shall be deemed to have relied on the misrepresentation if it was a misrepresentation at the time of purchase and has a right of action for damages or, alternatively, may elect to exercise a right of rescission, provided that (a) Bahia Graphite will not be liable if it proves that the purchaser purchased the securities with knowledge of the misrepresentation; (b) in an action for damages, Bahia Graphite is not liable for all or any portion of the damages that it proves does not represent the depreciation in value of the securities as a result of the misrepresentation relied upon; and (c) in no case shall the amount recoverable exceed the price at which the securities were offered. Section 138 of the *Securities Act* (Ontario) provides that no action shall be commenced to enforce these rights more than (a) in the case of any action for rescission, 180 days after the date of the transaction that gave rise to the cause of action or (b) in the case of any action, other than an action for rescission, the earlier of (i) 180 days after the purchaser first had knowledge of the fact giving rise to the cause of action or (ii) three years after the date of the transaction that gave rise to the cause of action.

In Manitoba, the *Securities Act* (Manitoba), in Newfoundland and Labrador the *Securities Act* (Newfoundland and Labrador), in Prince Edward Island the *Securities Act* (PEI), in Yukon, the *Securities Act* (Yukon), in Nunavut, the *Securities Act* (Nunavut) and in the Northwest Territories, the *Securities Act* (Northwest Territories) provide a statutory right of action for damages or rescission to purchasers resident in Manitoba, Newfoundland, PEI, Yukon, Nunavut and Northwest Territories, respectively, in circumstances where this presentation or an amendment hereto contains a misrepresentation, which rights are similar, but not identical, to the rights available to Ontario purchasers.

If this presentation is considered to be an offering memorandum, and this presentation, or any amendments thereto, contains a misrepresentation, an investor resident in British Columbia, Alberta or Québec who purchased securities in reliance on the “accredited investor” exemption under National Instrument 45-106 - Prospectus Exemptions, will not be entitled to the statutory rights of action described above. However, in consideration of purchasing the securities and upon acceptance by Bahia Graphite of the investor’s subscription in respect thereof, investors in those jurisdictions are hereby granted a contractual right of action for damages or rescission that is the same as the statutory rights of action described above provided to investors resident in Ontario under the *Securities Act* (Ontario).

QUALIFIED PERSON – Nico Scholtz (M.Sc., Pri. Sci. Nat.) and Carlos Bastos (M.Sc) supervised the preparation of and approved the scientific and technical information pertaining to the Bahia Graphite Project contained in this presentation and is not aware of any significant risks or uncertainties that could be expected to affect the reliability or confidence of the information contained herein. Each of Nico Scholtz and Carlos Bastos are qualified persons as defined by National Instrument 43-101 - *Standards of Disclosure for Mineral Projects*.

INTRODUCTION TO BAHIA GRAPHITE CORPORATION



Brazil has the **best growth potential** in the production of graphite, a material experiencing rapidly increasing use in a growing number of industries, including the production of batteries, emerging solar technologies, and in the manufacturing of electronic components.

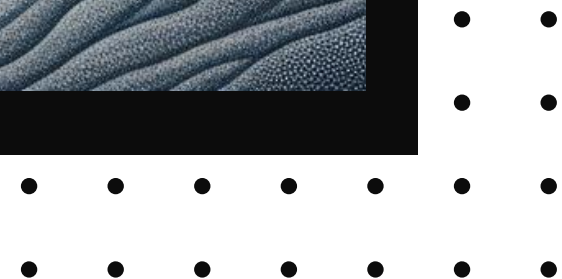
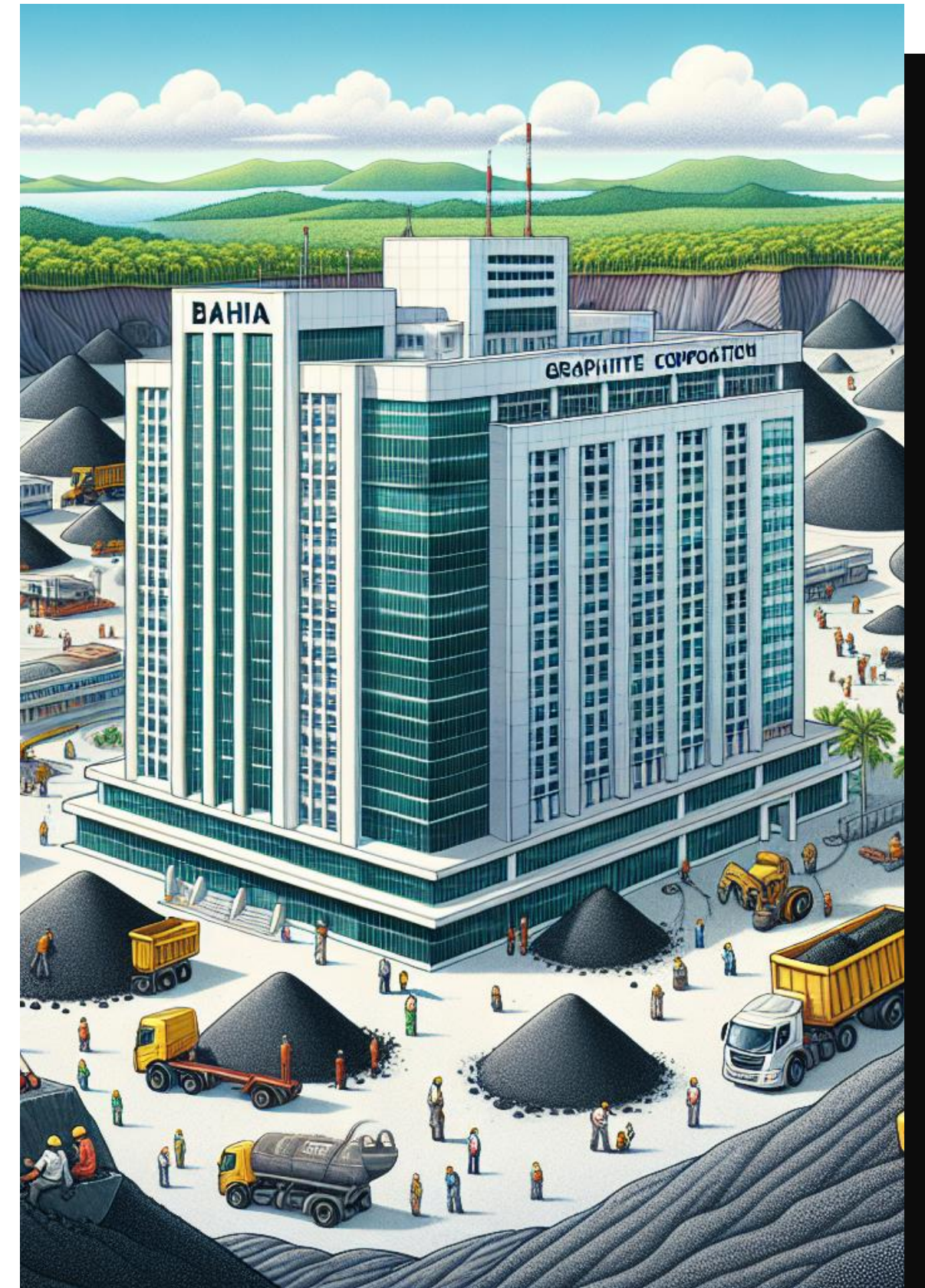
Bahia Graphite is at the forefront of Brazil's rise to the top.

OUR MISSION

To harness the vast potential of Brazil's graphite reserves to establish ourselves as the foremost leader in the industry. Through cutting-edge exploration, extraction, and refinement techniques, we aim to deliver superior quality graphite products to meet the evolving demands of various sectors, while prioritizing environmental stewardship and community prosperity.

OUR VISION

To pioneer the global graphite industry through unparalleled innovation and sustainable practices, leveraging Brazil's abundant resources to empower a greener and more technologically advanced future.



COMPANY OBJECTIVES

Harness Graphite Potential

Unlock the vast untapped graphite resources in Brazil to establish industry leadership. Bahia Graphite has acquired the entire graphite belt in Bahia, Brazil.

Cutting-Edge Exploration

Employ advanced exploration techniques to identify and delineate high-quality graphite deposits. Bahia Graphite has amassed a 123,646 Hectares position across 10 blocks.

Sustainable Extraction

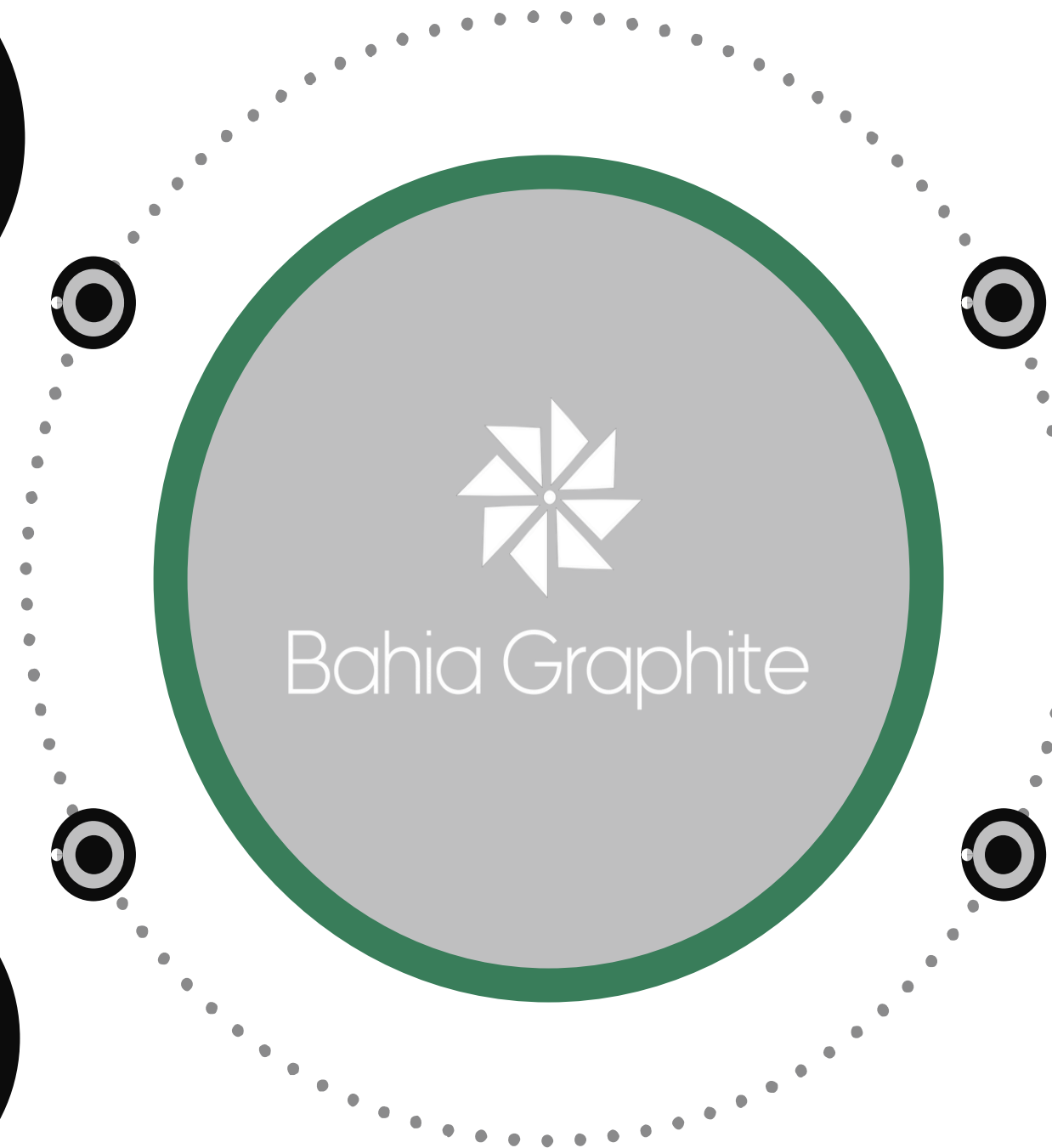
Develop responsible extraction methods that prioritize environmental stewardship and community well-being.

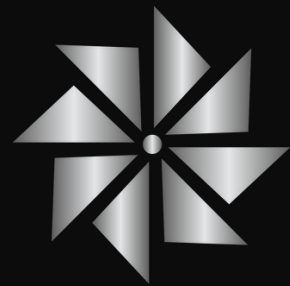
Superior Refinement

Implement state-of-the-art refinement processes to deliver premium graphite products for diverse applications.

Meet Evolving Demands

Adapt to the changing needs of various sectors, including energy storage, electronics, and advanced materials.





Bahia Graphite

OUR TEAM



BRIAN LEENERS

CEO & Executive Chairman

Brian received both his B.Comm. and LL.B. degrees from the University of British Columbia in 1992 and since that time has been focused on the management of private and public venture companies. In 2002, he founded Nexvu Capital Corp. which is a venture capital firm focused on developing companies in the Materials and Technology Sectors. Nexvu provides hands-on business development strategy and expertise for start-up and growth phase companies. Since formation in 2002, Nexvu has been directly responsible for raising in excess of US\$100 million for Nexvu transactions (not including any public market buy-side volumes).

ARMANDO FARHATE

Chief Operating Officer

Armando has more than 36 years of industry experience, with the last 13 years being in the mining sector in Brazil, Canada, Namibia and Botswana. He has occupied C-Level, Upper Management and Consultant positions in the largest western Natural Graphite mining and exploration companies. Sits currently at the Board of Directors for three Canadian mining and exploration companies. He brings extensive experience in all areas of this industry segment, with special focus on Operations, Sales & Marketing, Engineering and Mineral Resource Development. He has a Bachelor Degree in Mechanical Engineering, holds an MBA, and is a Certified Board Member by IBGC

ANTONIO VITOR

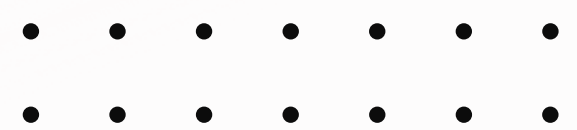
President

Antonio has vast experience in project management at large corporations, including Transpetro, PwC, Shell, along with 10 years of experience in mining. He was involved in the mining projects Zumbi Mineração Grafite de Veio, AMA Gold, Hawking Graphite, 3 S Rare Earths and Copper, Palmeres Rare Earths. He graduated in Business Administration and holds an MBA. He is a Member of IBGC

DR. MAURO TERENCE

Chief Technology Officer

Mauro holds a Chemistry degree from UPM (Universidade Presbiteriana Mackenzie), a Master's, Ph.D., and Post-doctorate in Nuclear Technology from USP. During his 25-year tenure as a professor at UPM, he coordinated postgraduate programs in Materials Engineering and nanotechnology. His research focuses on polymers, nanomaterials (graphene and graphene oxide from graphite), and materials characterization. He helped create MackGraphe (2012-2019) at the UPM, participated in mining projects, and received a productivity grant from CNPq-Brazil for his technological innovations.



RESEARCH AND DEVELOPMENT



CO-DEVELOPMENT OF BATTERY ANODE
POWDERS (GRAPHITE, SILICON &
HYBRID GRAPHITE/SILICON ANODES)



GRAPHITE PROCESSING TO 95%
CONCENTRATE AND THEN TO
BATTERY GRADE (NOTE - NEW
PROPRIETARY ELECTROTHERMAL
TECHNIQUES FOR PROCESSING
SILICA TO SILICON, ADVANCING ON
BATTERY MATERIALS PROCESSING



Green Graphite
TECHNOLOGIES

INNOVATIVE GRAPHITE PURIFICATION
TECHNIQUE, WITH LOWER COST AND
ENVIRONMENT FOOTPRINT. LOI
FORESEEING POSSIBLE LICENSING
AND / OR JV FOR SPHERICAL GRAPHITE
PROCESSING

KEY POINTS – GRAPHITE IN BRAZIL

The graphite market has experienced significant shifts in 2024-2025, here are the key developments shaping investment interest:

01

China's dominance of natural graphite and threats of export restrictions have accelerated efforts to develop non-Chinese sources. The US Inflation Reduction Act mandates that EV's using Chinese graphite lose tax credits by 2027.

02

The International Trade Commission determined that Chinese imports have "materially retarded" the growth of the U.S graphite anode sector. AAMP requesting antidumping duties of 828-921% to offset China's below-cost pricing.

03

Global EV sales rebounded in late 2024, driving demand for battery—grade graphite. Both natural and synthetic graphite are expected to face deficits exceeding 600,000 tpa by 2034.

04

Brazil is the fourth-largest graphite producer, and in 2023, the USA was Brazil's second-largest natural graphite importer, accounting for 22% of its total trade.

05

The EU is negotiating a Free Trade Agreement with Brazil as part of the EU's Association Agreement negotiations with the Mercosur countries.

06

Through BNDES and Finep, Brazil is allocating \$815M in 2025 to develop strategic minerals including graphite. Bahia Graphite's team is extremely active on this aspect.

07

The natural graphite segment is the fastest-growing in Brazil with market revenue projected to rise at 6.1% CAGR through 2030.

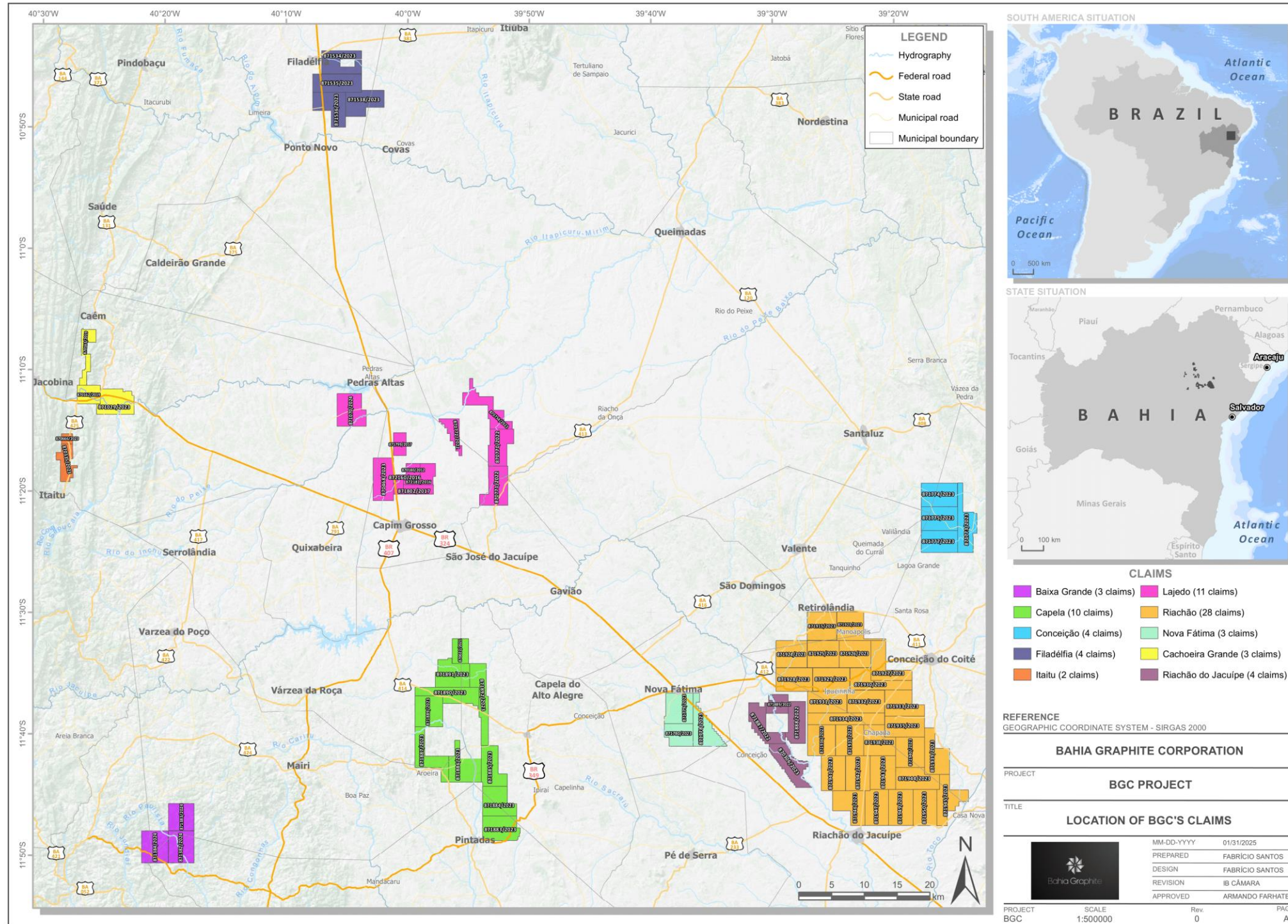
08

Brazilian operating costs are approx. \$396/t while Canadian mines face operating costs exceeding \$800/t. Flake graphite ranges from \$1200-\$2400/t with Spherical graphite reaching \$4000-\$4700/t driven by EV demand.



BAHIA GRAPHITE PROJECTS

Bahia Graphite presents a set of areas located in the north-central region of the state of Bahia, Brazil that can be divided into 10 blocks, namely: Itaitu, Lajedo, Cachoeira Grande, Riachão do Jacuípe, Capela, Conceição, Filadélfia, Nova Fátima, Riachão, and Baixa Grande.



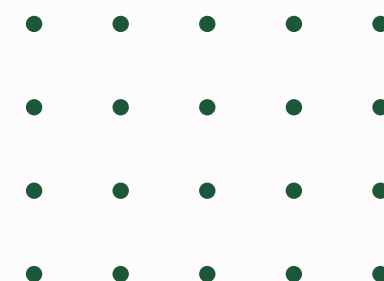
123,646

Hectares

Bahia Graphite's total land package totals 123,646 Hectares firmly establishing our presence in Brazil as a major graphite player



These areas are located close to important mineral deposits such as Gold, Chromium, Copper, Graphite, Lead and Zinc, in addition to several occurrences of other substances such as Phosphate, Nickel and Barium mapped by the Geological Service of Brazil.



BAHIA GRAPHITE PROJECTS



NAME	AREA (Ha)	# OF CLAIMS	STATUS
ITAITU	1,336	2	NI 43-101 Compliant MRE
CAPELA	18,249	10	Graphite outcrops >10% TGC – Gold Anomaly
LAJEDO	13,400	11	NI 43-101 Compliant MRE
FILADELFIA	7,599	4	Three Graphite occurrences between 3.7 and 8.7% TGC; One Phosphate anomaly @ 40.77%
CACHOEIRA GRANDE	3,944	3	Initial Prospecting
RIACHAO	54,592	28	Initial Prospecting
RIACHAO DO JACUIPE	6,176	4	Initial Prospecting
NOVA FATIMA	5,244	3	Initial Prospecting
BAIXA GRANDE	5,402	3	Initial Prospecting
CONCEICAO	7,704	4	Initial Prospecting
TOTAL	123,646	72	



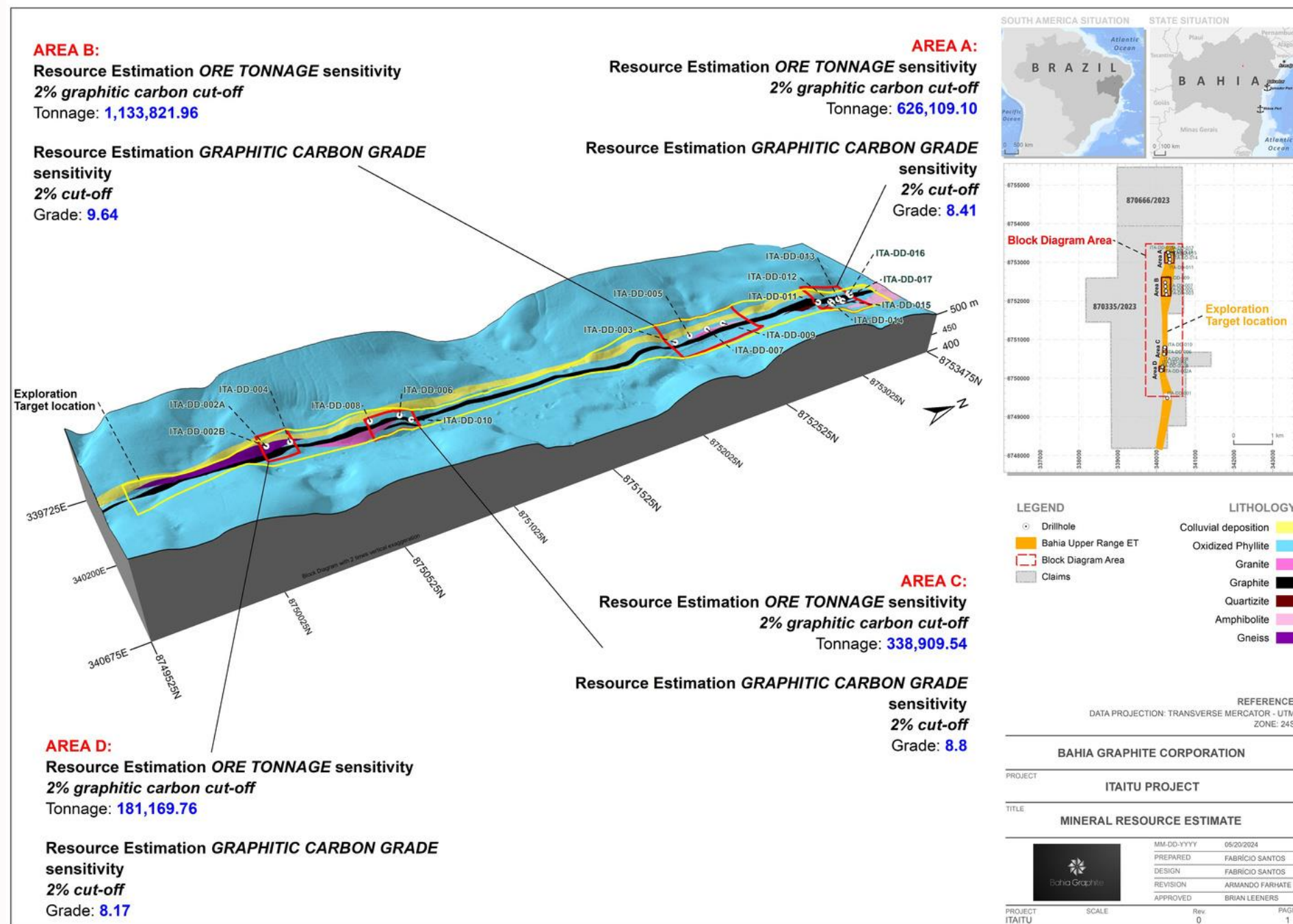
A STEP ABOVE THE REST

Bahia Graphite is the *only graphite company* outside of China to have presence of all 5 types of graphite located in a single state; small flake, medium flake, large flake, jumbo flake and vein graphite.

This allows for a significant competitive advantage over the rest of the world.

ITAITU GRAPHITE PROJECT

Our flagship asset, Itaitu has been the primary focus of Bahia Graphite where we have established a NI 43-101 Compliant MRE. Exploration work completed in 2023 and 2024 consisted of Geological Mapping, Trenching (14 trenches for 414 meters), Diamond Drilling (17 drill holes for 980.9m) and Bulk Density determinations. The inferred MRE was calculated at 2% TGC cutoff grade and produced 1,759,931 tonnes at a grade of 9.15% TGC for a total of 205,642 contained graphite tonnage.



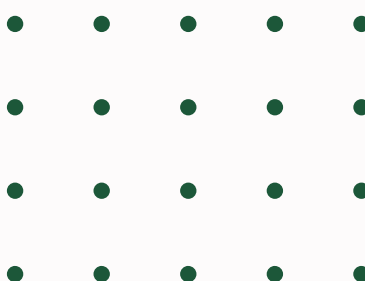
1,336

Hectares

The Itaitu project will be Bahia Graphite's primary asset to bring to production. It is our view that with limited exploration work, we can expand the MRE greatly.



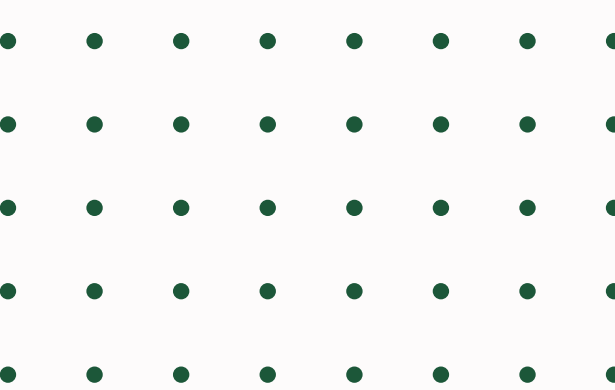
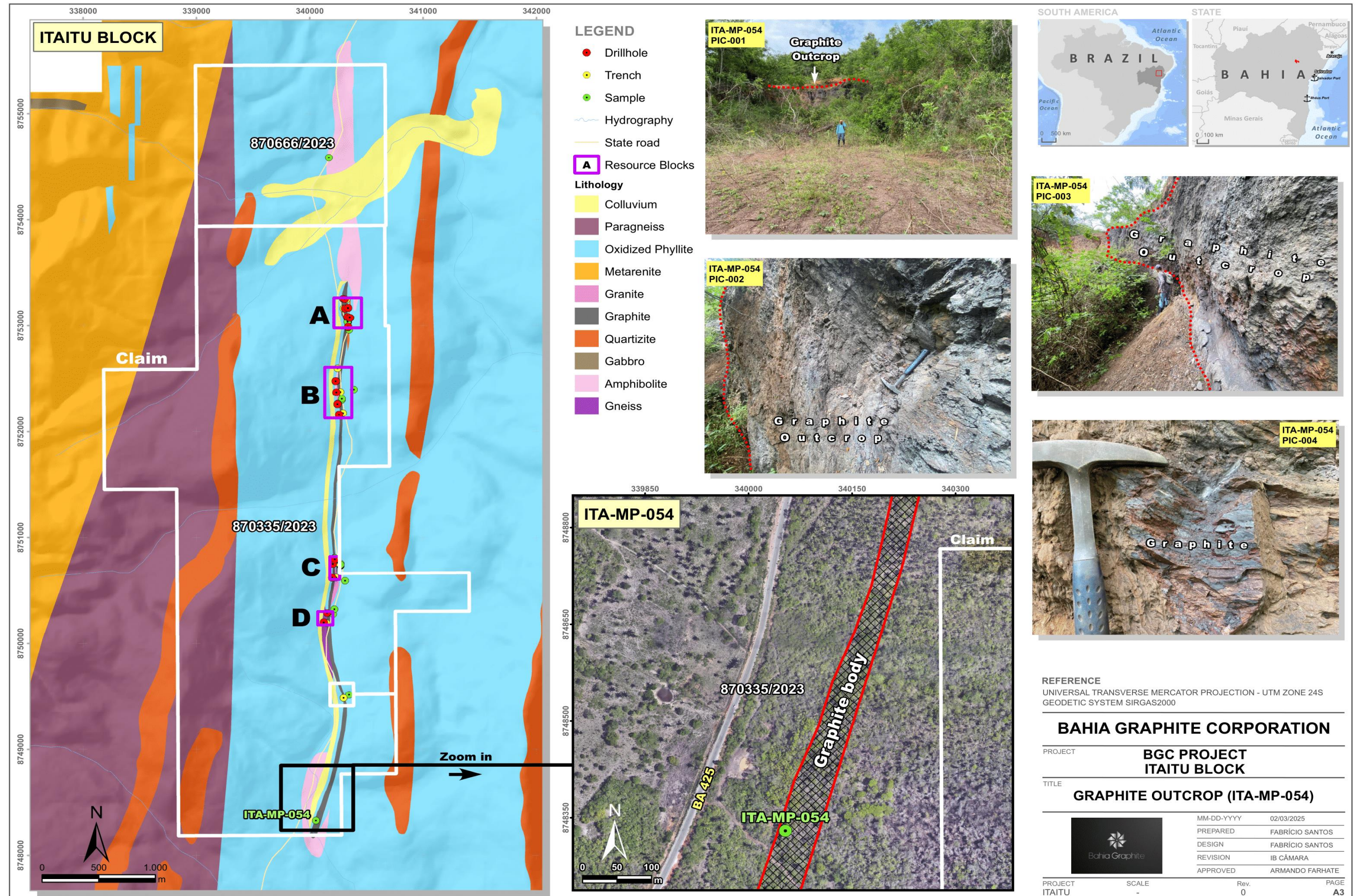
The deepest hole in our initial drill program reached depths of 97.55m. In that hole, the apparent thickness of the graphite body was 58.55m and the graphite body was not completely surpassed. Deeper drilling is needed to identify extend of deposit.



ITAITU GRAPHITE PROJECT

Bahia Graphite is pleased to report that our ground team has made a new discovery at our Flagship Itaitu asset. As you can see on the photos below, the initial Maiden Resource Estimate was completed on Blocks A, B, C, and D.

This new discovery is a major outcrop with around 30 meters of length, on trend with the large graphite body on the southern part of the tenements. The new discovery is labeled in green as ITA-MP-054 in the map. Sampling results are pending analysis.



ITAITU GRAPHITE PROJECT

*** PRIMARY FUNDING TO DFS IN 2025 ***

\$4,150,000

USD

Required to solidify asset acquisition and take to DFS prior to year end 2025. Required for permitting and construction of production facility



Milestones and work to be performed in 2025:

- Drilling to indicated resources, 3,000 meters
- Lab assays
- 43-101 MRE Upgrade
- PFS + preliminary engineering
- Infill drilling + mining plan
- DFS + detailed engineering

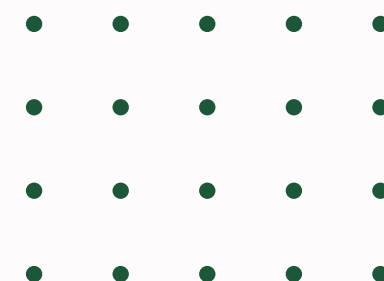
ITAITU 43-101 COMPLIANT EXPLORATION TARGET

MINERALIZATION TONNES (rounded to nearest 100k)	8,000,000
DENSITY	2.02
AVG. MINERALIZATION GRADE (TGC %)	9.0
GRAPHITE TONNES (rounded to nearest 10k)	720,000

ITAITU EXTRAPOLATED (*) POTENTIAL EXPLORATION TARGET

POTENTIAL MINERALIZATION TONNES (rounded to nearest 100k)	19,700,000
DENSITY	2.02
AVG. MINERALIZATION GRADE (TGC %)	9.0
POTENTIAL GRAPHITE TONNES (rounded to nearest 10k)	2,150,000

(*) Considers average length of all trenches (18.58m), deeper hole intersection (97.55m), and same grade and density used for the compliant MRE calculation



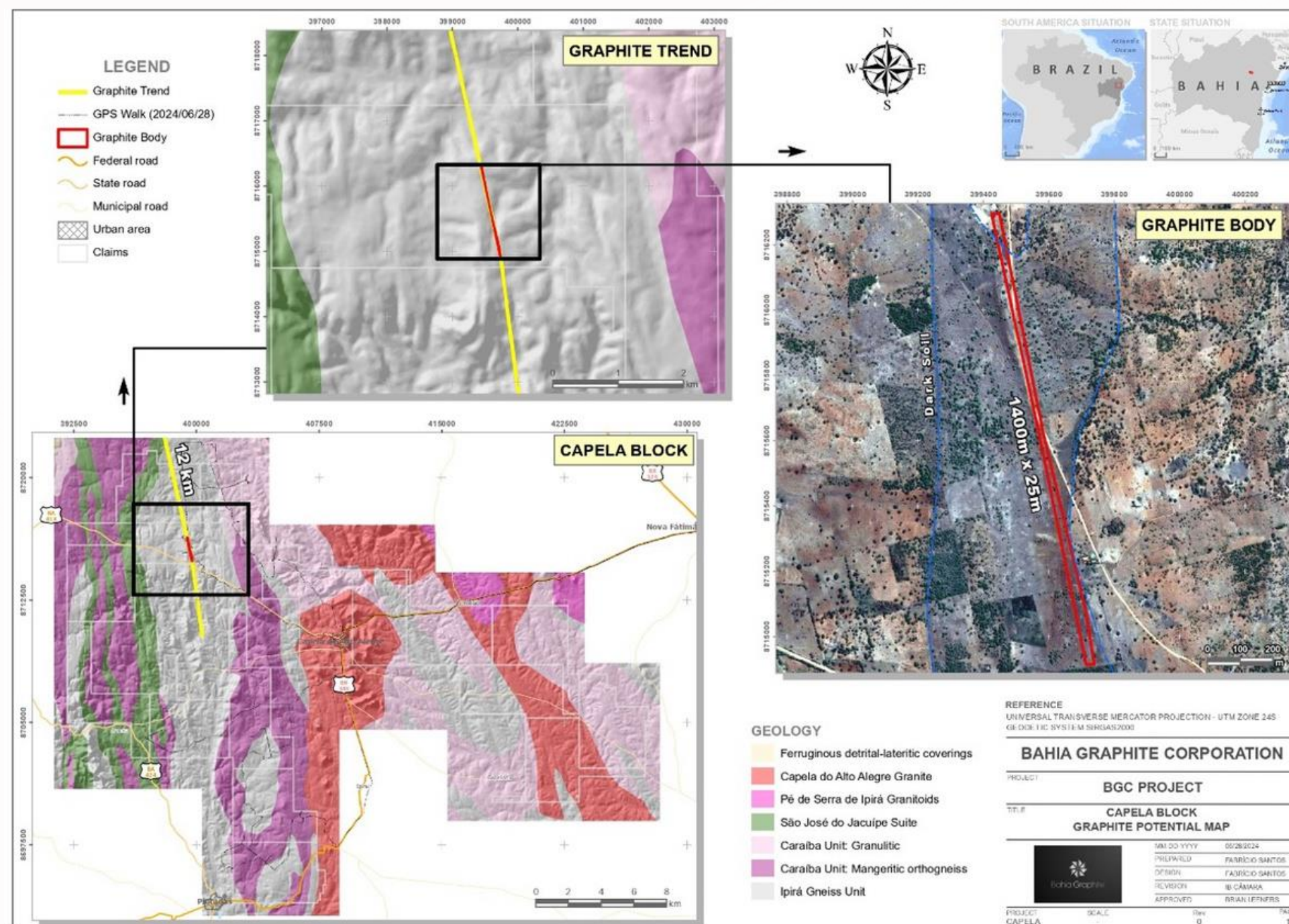
CAPELA GRAPHITE PROJECT

18,249
Hectares

The Capela asset is a 18,249 Ha property that has recently show cased impressive results. This asset has a mapped graphite body estimated to be approximately 1.4 km in length, with graphite outcrop located between two blocks with graphite occurrences. Geochemical results demonstrate high graphite content ranging from 21.89 to 26.23 % TGC.



Latest surface mapping identified possibility of five ore bodies in the area.



LAJEDO GRAPHITE PROJECT

NEW OPTION ACQUISITION

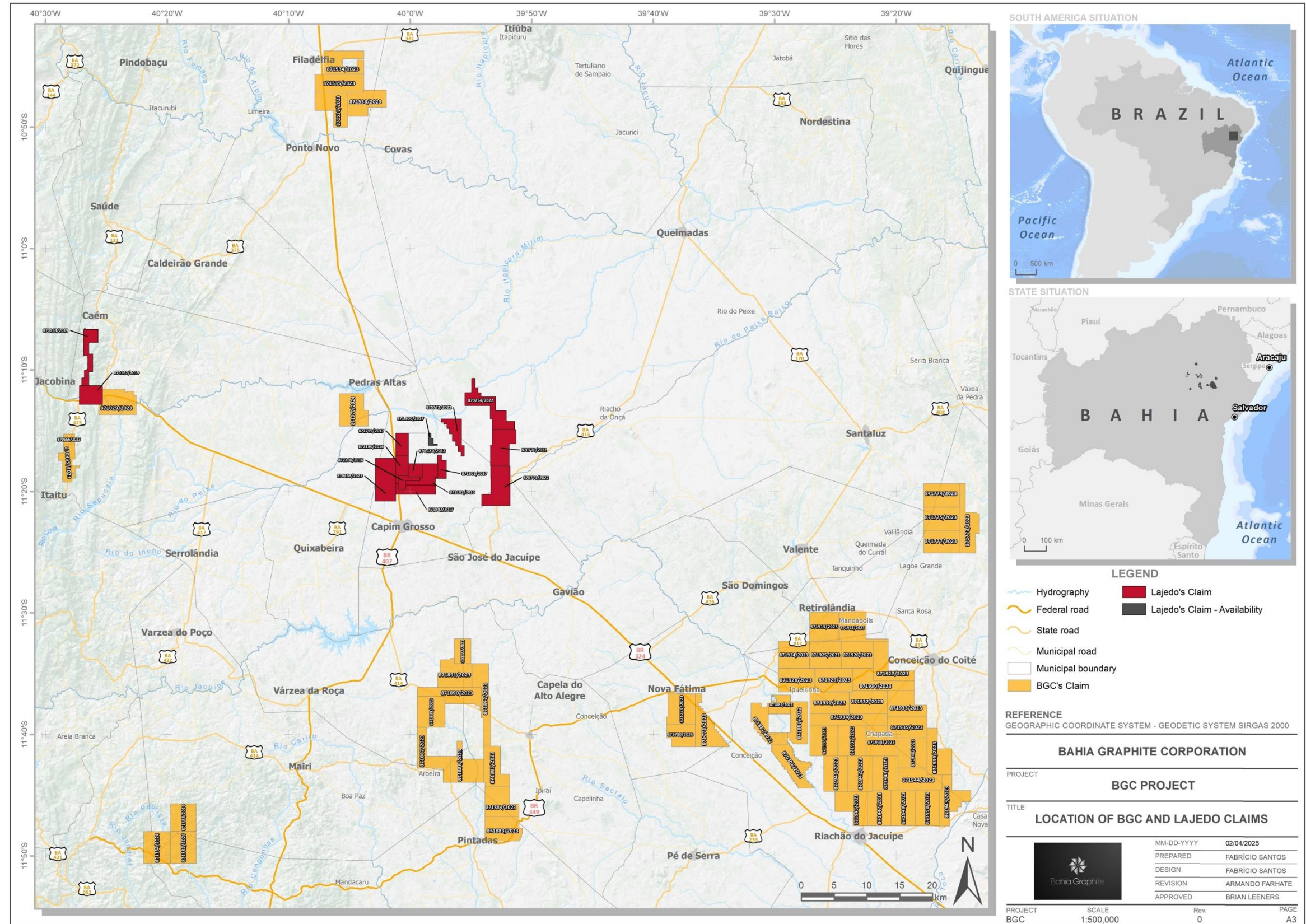
13,402
Hectares

The Lajedo assets are a group of 12 tenements optioned by the company. Previous development work on the assets includes a MRE of 7.96 millions tons @ 5.86% grade resulting on 467k tons of contained graphite. One of the tenements has mining requirement filed at ANM and another has final report filed.

Lajedo is one of the three locations in the world (after Sri Lanka and Namibia) where vein graphite is found.



These areas are contiguous to Pedras Altas and Cachoeira Grande areas, central to BGC projects



LAJEDO GRAPHITE PROJECT

*** PRIMARY FUNDING TO DFS IN 2025/2026 ***

\$3,054,000

USD

Required to solidify asset acquisition and take to DFS. Secondary asset not required for permitting and construction of production facility, but great to have ready.



Milestones and work to be performed in 2025/2026:

- Drilling to indicated resources, 4,400 meters
- Lab assays
- 43-101 MRE Upgrade
- PFS + preliminary engineering
- Infill drilling + mining plan
- DFS + detailed engineering

Work already completed:

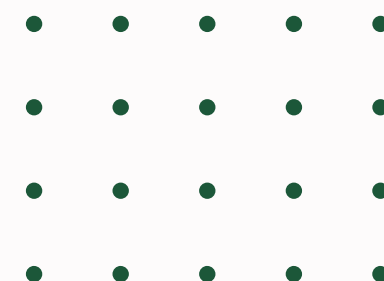
- 34 drillholes for 4,784.1m
- 63 trenches for 3,830.55m
- Metallurgical test work
- Bulk density determinations
- Exploration target

LAJEDO 43-101 COMPLIANT EXPLORATION TARGET

MINERALIZATION TONNES (rounded to nearest 100k)	Upper 30,000,000 Lower 5,000,000
DENSITY	2.86
AVG. MINERALIZATION GRADE (TGC %)	5.85
GRAPHITE TONNES (rounded to nearest 10k)	Upper 1,750,000 Lower 300,000

Figure 1. Graphite mineralisation exposed trench CGT001 (20 to 22 m) grading 21.65% TGC

Figure 2. Graphite mineralisation exposed trench CGT002 (23 to 24m) grading 41.79 % TGC



An aerial illustration of a large industrial facility, likely a graphite processing plant. The scene is dominated by numerous large, conical piles of material, possibly graphite, arranged in rows. In the center, there are several multi-story industrial buildings with a grid-like facade. One building prominently displays the word "BAHIA" on its upper section. Another building below it has the Greek text "ΓΡΑΦΙΤΕ ΣΥΜΠΟΛΤΩΝ" (Graphite Composites) written on its side. The background shows a landscape with rolling green hills and a body of water under a clear sky. The entire image is overlaid with a semi-transparent green filter and decorative geometric shapes in the corners.

PATH FORWARD

Bahia Graphite has signed a non-binding MOU with a major EU partner to expedite our path to scaled production of graphite materials with production plant construction slated for 2026/2027.

PARTNERSHIP

Bahia Graphite has signed an **exclusive non-binding MOU with a major EU partner**. Here are the details of the partnership:

01

The Partner and BGC will discuss and sign a Joint Venture Agreement to DE-RISK the implementation of the graphite **production plant** in Itaitu

02

The Partner will participate in the exploration period as strategic JV partner of Bahia Graphite, supporting BGC by identifying strategic investors and financial partners

03

BGC will actively search for targets within its tenements, or possibly other tenements that offer flake graphite deposits suitable for battery applications

04

The Partner will endeavor its best efforts for sourcing the necessary capital loan and bank guarantees to finance the Implementation of the defined Production Plant

05

BGC will finalize the geological exploration and engage the execution of a DFS, and completion of metallurgical studies at Itaitu



2025 TIMELINE

Bahia Graphite will work towards going public and at the same time, bringing Itaitu to a DFS as soon as possible. Proper market performance and funding could see Itaitu and Lajedo at DFS stage significantly increasing value of BGC in a short period of time.



Q1 2025

Pre-RTO financing raising total of \$4M CAD



Q2 2025

Go public & \$4M CAD financing - Drill core targets to indicated resources; define exploration plan for other targets.



Q3 2025

PFS + infill drilling at MRE



Q4 2025 and ahead

DFS, permitting, construction

BGC LISTING STRATEGY & LONG-TERM TIMELINE

BGC Timeline:

2023 – Creation of BGC and first funding open

2024 – Expanded land package to 123,646 Ha with **2 MRE's** with 43-101 exploration targets, 467k tons @ 5.86% TGC & 205,642 tons at 9.15% TGC = *17 years of mine life already at 40,000 tpy capacity (Graphite deficit identified and underway)*

2025 – Second funding open, Go-Public, PFS & DFS Itaitu, Upgraded 43-101's, Research and Development potential breakthroughs with UC Davis & Green Graphite

2026 – Permitting and engineering for 40,000 tpy production plant, Production plant construction underway, 2-3 Assets to DFS

2027 - 2028 – Commercial operations begin, production and shipment. **(Graphite deficit and demand expected to be rapidly increasing in time for us to come online)**

Total estimated funds needed: \$12,752,000 taking 3 separate assets to DFS and ready for production + \$65,252,500 for 40,000 tpy facility = \$78,004,500 USD

4-5 year plan from first funding to commercial production.

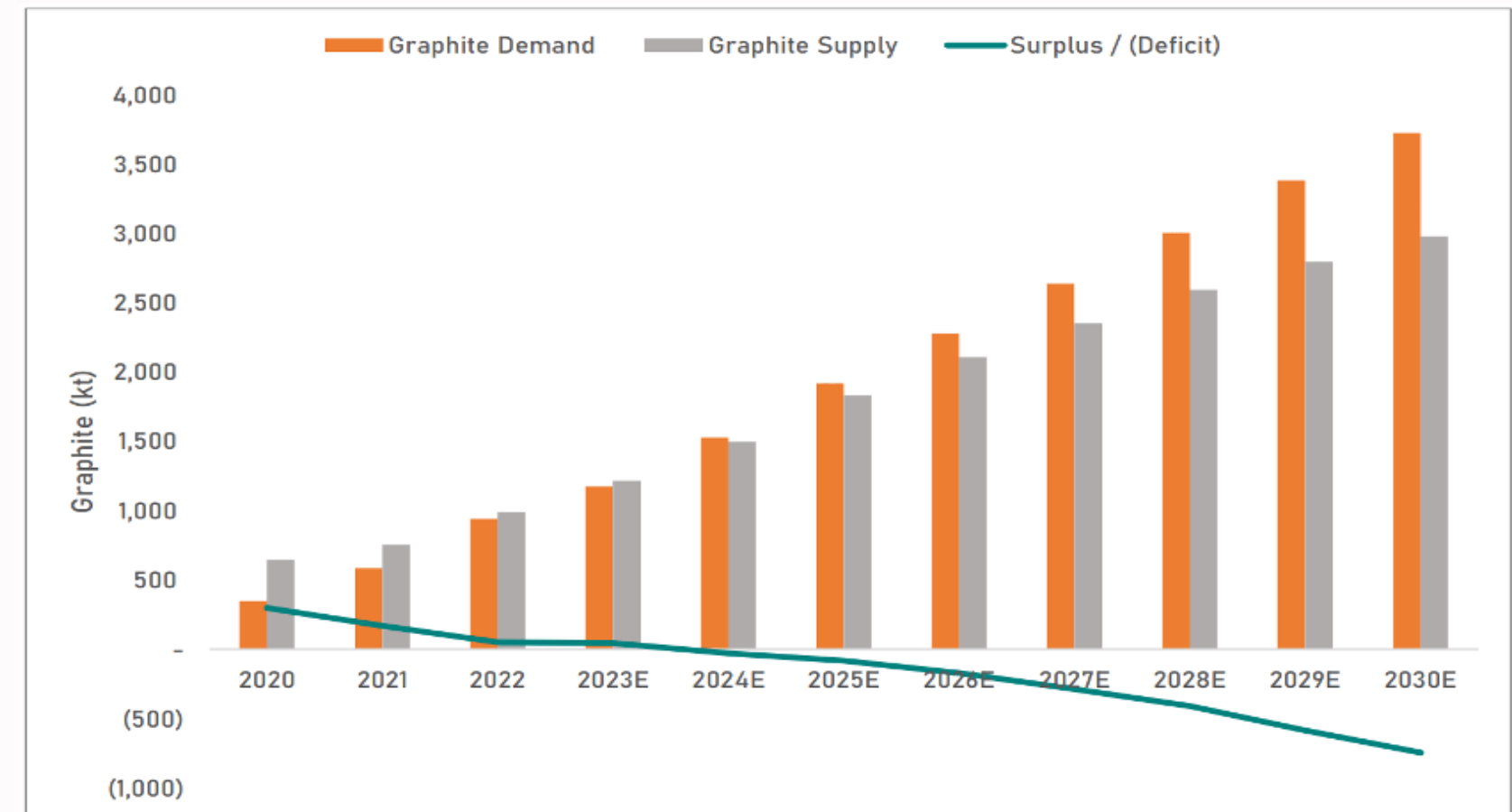


Figure 1: Graphite demand / supply showing market deficit beginning 2025E
Source: Macquarie Research (March 2023)

It appears that the best time to list would be early 2025. UBS forecasts natural graphite demand rising by six times this decade to reach a demand of 6.3 million tonnes pa, with a deficit forming from 2025. Others such as Macquarie Research are forecasting graphite deficits to begin in 2024 and increasing each year to 2030.

- Graphite deficit will be recognized in 2025 with no identified potential to meet rising demand, moving toward large-scale production in a material deficit should give listing extra growth.
- Benchmark Mineral Intelligence [forecasts](#) we will need 97 new 56,000tpa natural flake graphite mines from 2022 to 2035 to meet surging demand.

INVESTMENT BUDGET - DEVELOPMENT

INVESTMENT BUDGET - DEVELOPMENT	USD
Drilling to indicated resources 3,000 METERS	\$ 600,000
Lab assays	\$ 150,000
MRE	\$ 100,000
PFS + preliminary engineering	\$ 300,000
Infill drilling + mining plan	\$ 500,000
DFS + detailed engineering	\$ 500,000
BUDGET FOR ITAITU TO DFS	\$ 2,150,000
Drilling to indicated resources 4,400 METERS	\$ 880,000
Lab assays	\$ 220,000
MRE	\$ 100,000
PFS + preliminary engineering	\$ 300,000
Infill drilling + mining plan	\$ 500,000
DFS + detailed engineering	\$ 500,000
BUDGET FOR LAJEDO TO DFS	\$ 2,500,000
Trenching + drilling + infill drilling to indicated resources	\$ 3,560,000
Lab assays	\$ 890,000
MRE	\$ 100,000
PFS + preliminary engineering	\$ 300,000
Infill drilling + mining plan	\$ 500,000
DFS + detailed engineering	\$ 500,000
BUDGET FOR CAPELA TO DFS	\$ 5,850,000
Itaitu Acquisition Payment	\$ 1.745.000
Acquisition of 12 Tenements for Lajedo	\$ 457.000
Permitting, including EIA-RIMA	\$ 50.000
ACQUISITIONS & PERMITS	\$ 2.252.000
TOTAL DEVELOPMENT BUDGET	\$12.752.000

INVESTMENT BUDGET - PRODUCTION

<u>INVESTMENT BUDGET - PRODUCTION</u>	<u>USD</u>
40,000 TPA plant (engineering, construction, equipment)	\$ 60,000,000
Commissioning	\$ 700,000
Contingency 7.5%	\$4 .552.500
<u>TOTAL PLANT CONSTRUCTION (JV PARTNER)</u>	<u>\$65.252.500</u>

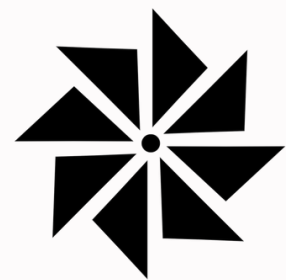
SHARE STRUCTURE & FINANCING

CURRENT SHARE STRUCTURE*	
Founder & Seed	9,500,001
Acquisition of BGC Brazil	10,000,000
PP @ \$0.15 Half Warrants @ \$0.50	10,220,671 5,110,335 Warrants
Itaitu Share Issuance	10,000,000
Basic Shares Outstanding	39,720,672
Warrants (\$0.50)	5,110,335

PRE-RTO FINANCING // CAD	
Pre-Money Valuation	\$15.8M
Financing Amount	\$4,000,000
Price	\$0.40
Unit	Share + ½ Warrant
Total Securities to be Issued	10,000,000 5,000,000 Wts

USE OF PROCEEDS // CAD	
G&A + Working Capital	\$850,000
ITA Payment (100%)	\$2,500,000
Lajedo Payment (100%)	\$650,000
TOTAL:	\$4,000,000


*All shares escrowed on a gradual release over 36 months



Bahia Graphite

**THANK
YOU**

Brian Leeners - CEO

 +1 (604) 862-4184

 bahiagraphite@gmail.com

 www.bahiagraphite.com

